

plastic pallets & boxes

INKA
PALLETS®
Stacks Better...!

Contents

400 x 600mm 'Display' pallets	page 3
600 x 800mm Half-Euro size	pages 4-5
800 x 1200mm Euro size	pages 6-8
1000 x 1200mm UK Industry size	pages 9-12
Multi-trip boxes	pages 13-14
Other products	page 15

Our plastic pallets are strong, light, clean and safe and suitable for storage, transport and the export of products.

This combination of characteristics makes our plastic pallets well suited for the food, chemical, electronic & pharmaceutical industries.

Our plastic pallets are all made using recycled raw materials and we invite our customers to return unwanted pallets so they can be re-granulated to help form a new generation of products.

The production processes used conform to the quality requirements of most stringent EU production standards.

SF 400CD/PD

**dimensions:**

400 x 600 x 135mm

weight:

0.6kg/0.9kg

capacities:

Dynamic	350kg
Static	500kg
Racked	N/A

style:

Nesting

pallets per stack/space:

70/280

options:

- This pallet is available with either a cardboard or plastic removable deck.



P44

**dimensions:**

400 x 600 x 150mm

weight:

2.5kg

capacities:

Dynamic	200kg
Static	500kg
Racked	N/A

style:

Nesting

pallets per stack/space:

40/200



SF 1W



dimensions:
600 x 800 x 150mm

weight:
3.9kg

capacities:

Dynamic	400kg
Static	800kg
Racked	N/A

style:
Nesting/Runner

pallets per stack/space:
66/132

options:

- Anti-slip grommets



AK60/80



dimensions:
600 x 800 x 143mm

weight:
3.2kg

capacities:

Dynamic	500kg
Static	1000kg
Racked	N/A

style:
Nesting (Runners optional)

pallets per stack/space:
35/70

options:

- Clip-on runners
- Raised edge



ZK60/80



dimensions:
600 x 800 x 155mm

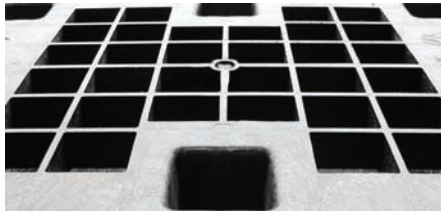
weight:
6.5kg

capacities:
Dynamic 600kg
Static 1000kg
Racked N/A

style:
Nesting (Runners optional)

pallets per stack/space:
35/70

- options:**
- Clip-on runners
 - Raised edge



SF 600



dimensions:
600 x 800 x 160mm

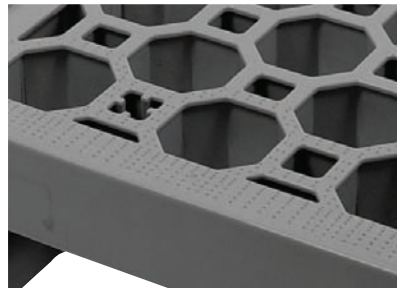
weight:
9.5kg

capacities:
Dynamic 500kg
Static 800kg
Racked N/A

style:
Runner

pallets per stack/space:
16/32

- options:**
- Raised edge



SF 800UL



dimensions:
800 x 1200 x 120mm

weight:
3.7kg

capacities:

Dynamic	350kg
Static	700kg
Racked	N/A

style:
Nesting

pallets per stack:
80

options:

- Raised edge
- Anti-slip grommets



SF 800L



dimensions:
800 x 1200 x 155mm

weight:
5.6kg

capacities:

Dynamic	800kg
Static	1500kg
Racked	N/A

style:
Nesting (Runners optional)

pallets per stack:
45

options:

- Raised edge
- Clip-on runners



SF 800NR

**dimensions:**

800 x 1200 x 140mm

weight:

7.5kg

capacities:

Dynamic	800kg
Static	1200kg
Racked	400kg

style:

Nesting/Runner

pallets per stack:

35

options:

- Raised edge
- Anti-slip grommets



SF 800ES

**dimensions:**

800 x 1200 x 155mm

weight:

10.4kg

capacities:

Dynamic	1000kg
Static	4000kg
Racked	800kg

style:

Runner

pallets per stack:

16

options:

- Raised edge
- Anti-slip grommets



SF 800M1/M2



dimensions:
800 x 1200 x 150mm

weight:
11.9kg/12.4kg

capacities:
Dynamic 1000kg
Static 4000kg
Racked 800kg

style:
Runner

pallets per stack:
16

- options:**
- Raised edges



HP80



dimensions:
800 x 1200 x 145mm

weight:
20kg

capacities:
Dynamic 1000kg
Static 2500kg
Racked N/A

style:
Nesting

pallets per stack:
40



HP100



dimensions:

1000 x 1200 x 145mm

weight:

22kg

capacities:

Dynamic	1000kg
Static	2500kg
Racked	N/A

style:

Nesting

pallets per stack:

40



AK100/120



dimensions:

1000 x 1200 x 150mm

weight:

17.5kg

capacities:

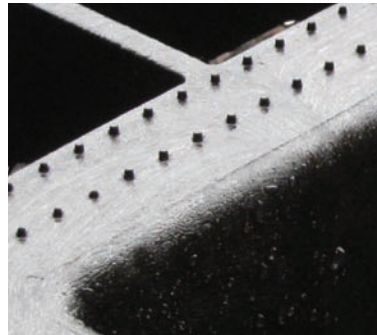
Dynamic	1000kg
Static	4000kg
Racked	N/A

style:

Nesting

pallets per stack:

35



SF 1000L



dimensions:

1000 x 1200 x 160mm

weight:

6.7kg

capacities:

Dynamic	1000kg
Static	2000kg
Racked	N/A

style:

Nesting (Runners optional)

pallets per stack:

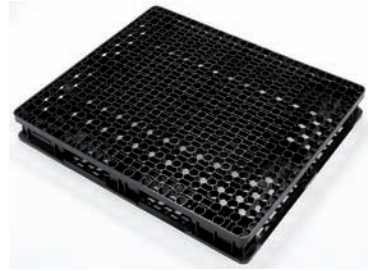
45

options:

- Raised edge
- Clip-on runners



SF 1000M



dimensions:

1000 x 1200 x 150mm

weight:

14.8kg

capacities:

Dynamic	1500kg
Static	4500kg
Racked	800kg

style:

Perimeter

pallets per stack:

16

options:

- Raised edge



SF 1000 3A

**dimensions:**

1000 x 1200 x 160mm

weight:

16kg

capacities:

Dynamic	1500kg
Static	4500kg
Racked	800kg

style:

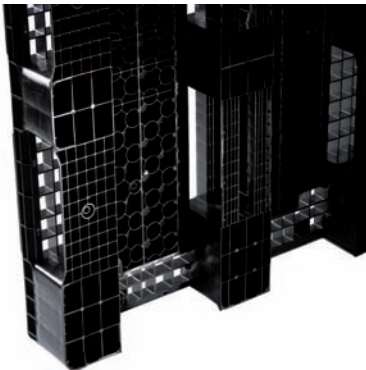
Runner

pallets per stack:

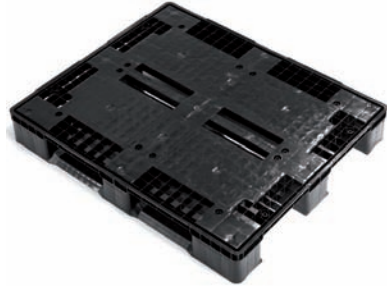
16

options:

- Raised edge
- Anti-slip grommets



SF 1000 3P

**dimensions:**

1000 x 1200 x 160mm

weight:

16kg

capacities:

Dynamic	1500kg
Static	4500kg
Racked	800kg

style:

Runner

pallets per stack:

16

options:

- Raised edge
- Anti-slip grommets



SF 1000 5A



dimensions:

1000 x 1200 x 160mm

weight:

16.7kg

capacities:

Dynamic 1500kg

Static 4500kg

Racked 1000kg

style:

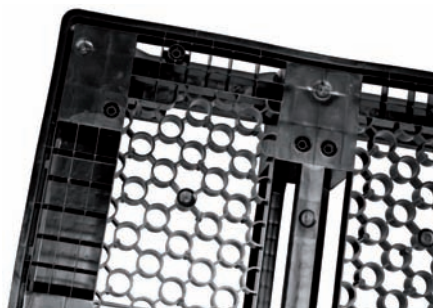
Perimeter

pallets per stack:

16

options:

- Raised edge



SF 1000 5P



dimensions:

1000 x 1200 x 160mm

weight:

16.7kg

capacities:

Dynamic 1500kg

Static 4500kg

Racked 1000kg

style:

Perimeter

pallets per stack:

16

options:

- Raised edge
- Anti-slip grommets



SF BOX 800



outside dimensions:
800 x 1200 x 910mm

inside dimensions:
755 x 1155 x 750mm

loading flap:
600 x 350mm

total weight:
20.7kg

capacities:

Dynamic	1500kg
Static	4000kg
Racked	800kg

volume:
650 litre

options:

- Alternative height
- With/without flap
- Logo ID markings



SF BOX 1000



outside dimensions:
1000 x 1200 x 910mm

inside dimensions:
955 x 1155 x 750mm

loading flap:
600 x 350mm

total weight:
28.6kg

capacities:

Dynamic	1500kg
Static	4000kg
Racked	800kg

volume:
825 litre

options:

- Alternative height
- With/without flap
- Logo ID markings



SF SUPERBOX



outside dimensions:

800 x 600 x 1032mm

inside dimensions:

756 x 556 x 875mm

folded dimensions:

800 x 600 x 372mm

loading flaps (w x h):

392 x 452mm & 391 x 711mm

total weight:

23.5kg

capacities:

Dynamic	500kg
Static	1500kg
Racked	N/A

volume:

370 litre

SF ULTRABOX



outside dimensions:

1200 x 1000 x 975mm

inside dimensions:

1110 x 910 x 790mm

folded dimensions:

1200 x 1000 x 400mm

total weight:

66.5kg

capacities:

Dynamic	1000kg
Static	4000kg
Racked	800kg

volume:

800 litre

options:

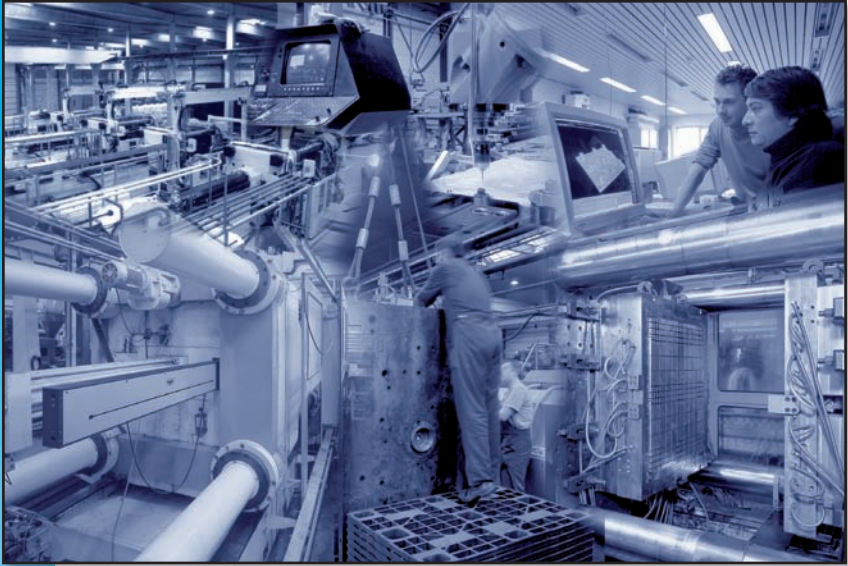
- Lid
- A4 label holders
- Spare side walls with/without doors



We can also supply a wide range of other plastic crates and packaging items. Please call our sales team with your requirements.

All references to loading capacities apply to evenly spread and fully restrained loads.

We operate a continual improvement policy, to ensure we supply competitively priced quality products (with a complete supply service to match) we reserve the right to alter specifications and availability if necessary without prior notice.



We are proud to present this unique range of plastic pallets. All of our pallets are manufactured using recycled raw materials, thus helping to reduce the impact to our environment and in keeping costs down.



Since we are not restricted to supplying pallets from a single source, it is our firm belief that this selection of pallets offers the best choice and value for money in the UK today.

INKA
PALLETS®

Inka Presswood Pallets Ltd
Unit 1 Horndon Industrial Park
West Horndon, Brentwood, Essex CM13 3XL

Tel. 01277 811085

Fax. 01277 811971

www.inkapallets.com